

**IES Report**

**DoubleRace™ | 107 | 120° Batwing, Flat, up | Diffuse, Round, down | 80 CRI | LO**

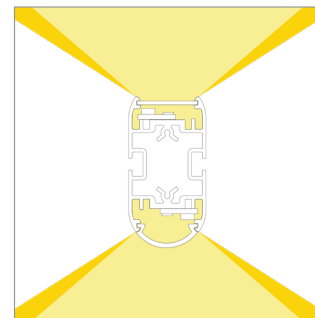
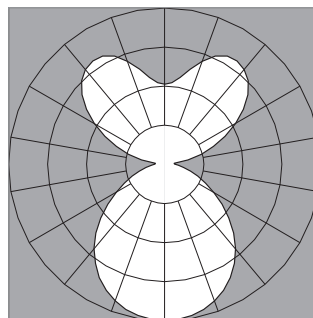
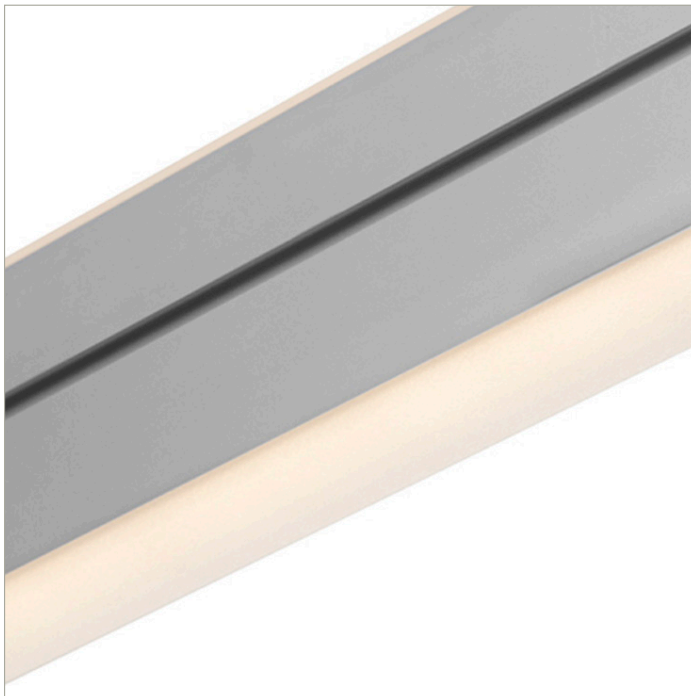
---

**107-DR-XX-4-48-XX-XX-XX-XX-X-X-Z-LO-35-G12-X-XX-X**

	2700K	3000K	3500K	4000K
Efficacy - Lumens per Watt	93	95	97	99
Total Lumens, 4' rail length (1219mm)	2753	2840	2898	2956
Lumens per foot (305mm)	688	710	724	739
Lumens per foot UP (305mm)	325	335	342	349
Lumens per foot DOWN (305mm)	364	375	383	391
Input Power (W), 4' rail length (1219mm)	29.9	29.9	29.9	29.9
Watts per foot (305mm)	7.5	7.5	7.5	7.5
CRI	85	85	85	85

Due to the large number of options in Vode's product offering, most Vode IES reports are factored reports prepared from source reports. Source reports are the IES test reports prepared for Vode by an NVLAP accredited photometric test laboratory. Factored reports are based on data from the Vode source reports.

If the data above is in black, it is directly from a Vode source report. If it is in grey, it is factored from Vode source reports. Reference details on Vode source reports can be found on the [IES File Finder](#) page on [vode.com](#).



## IES Report

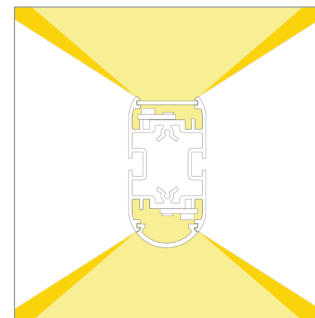
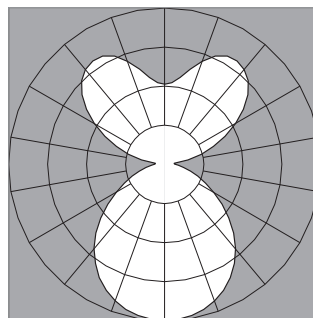
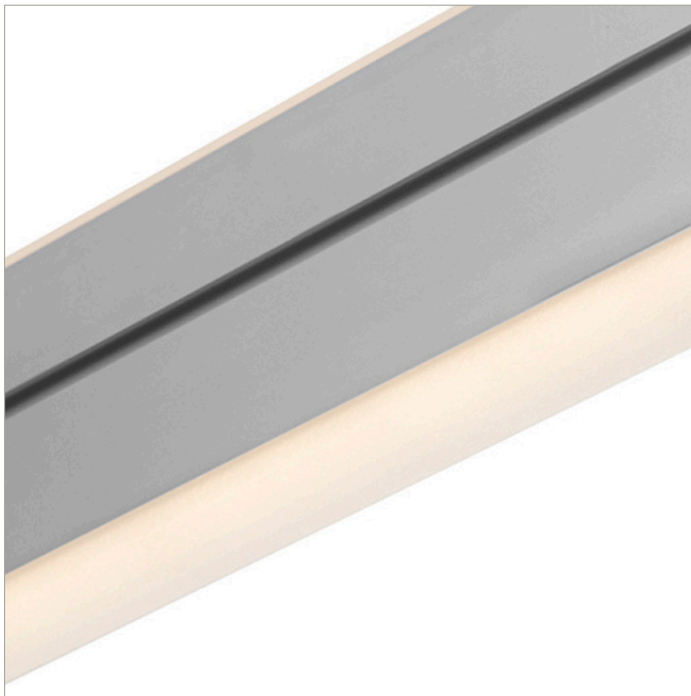
DoubleRace™ | 107 | 120° Batwing, Flat, up | Diffuse, Round, down | 80 CRI | SO

107-DR-XX-4-48-XX-XX-XX-XX-X-X-Z-SO-35-G12-X-XX-X

	2700K	3000K	3500K	4000K
Efficacy - Lumens per Watt	115	118	121	123
Total Lumens, 4' rail length (1219mm)	5506	5680	5796	5912
Lumens per foot (305mm)	1376	1420	1449	1478
Lumens per foot UP (305mm)	649	670	685	697
Lumens per foot DOWN (305mm)	727	750	766	781
Input Power (W), 4' rail length (1219mm)	48.3	48.3	48.3	48.3
Watts per foot (305mm)	12.1	12.1	12.1	12.1
CRI	85	85	85	85

Due to the large number of options in Vode's product offering, most Vode IES reports are factored reports prepared from source reports. Source reports are the IES test reports prepared for Vode by an NVLAP accredited photometric test laboratory. Factored reports are based on data from the Vode source reports.

If the data above is in black, it is directly from a Vode source report. If it is in grey, it is factored from Vode source reports. Reference details on Vode source reports can be found on the [IES File Finder](#) page on [vode.com](#).



## IES Report

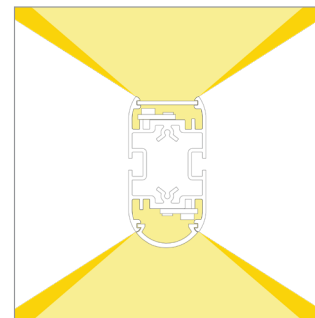
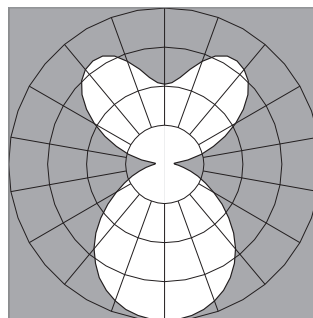
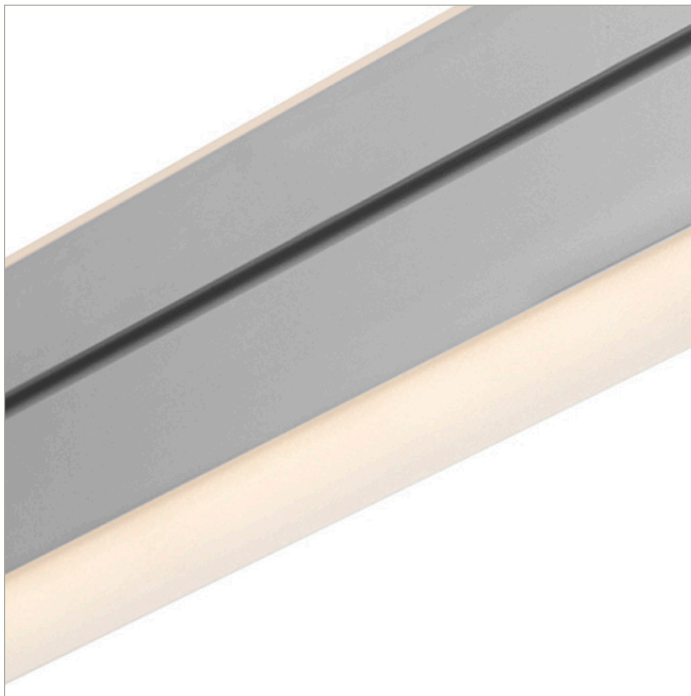
DoubleRace™ | 107 | 120° Batwing, Flat, up | Diffuse, Round, down | 80 CRI | HO

107-DR-XX-4-48-XX-XX-XX-XX-X-X-Z-HO-35-G12-X-XX-X

	2700K	3000K	3500K	4000K
Efficacy - Lumens per Watt	107	110	112	115
Total Lumens, 4' rail length (1219mm)	10461	10792	11012	11232
Lumens per foot (305mm)	2615	2698	2753	2808
Lumens per foot UP (305mm)	1234	1273	1299	1325
Lumens per foot DOWN (305mm)	1382	1526	1455	1484
Input Power (W), 4' rail length (1219mm)	98.4	98.4	98.4	98.4
Watts per foot (305mm)	24.7	24.7	24.7	24.7
CRI	85	85	85	85

Due to the large number of options in Vode's product offering, most Vode IES reports are factored reports prepared from source reports. Source reports are the IES test reports prepared for Vode by an NVLAP accredited photometric test laboratory. Factored reports are based on data from the Vode source reports.

If the data above is in black, it is directly from a Vode source report. If it is in grey, it is factored from Vode source reports. Reference details on Vode source reports can be found on the [IES File Finder](#) page on [vode.com](#).



## IES Report

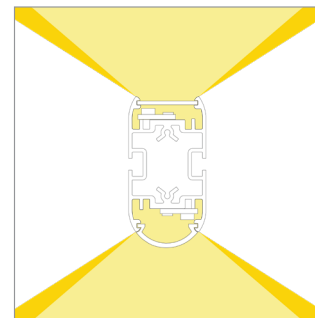
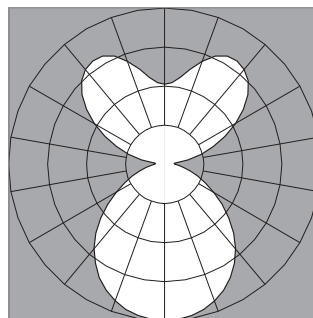
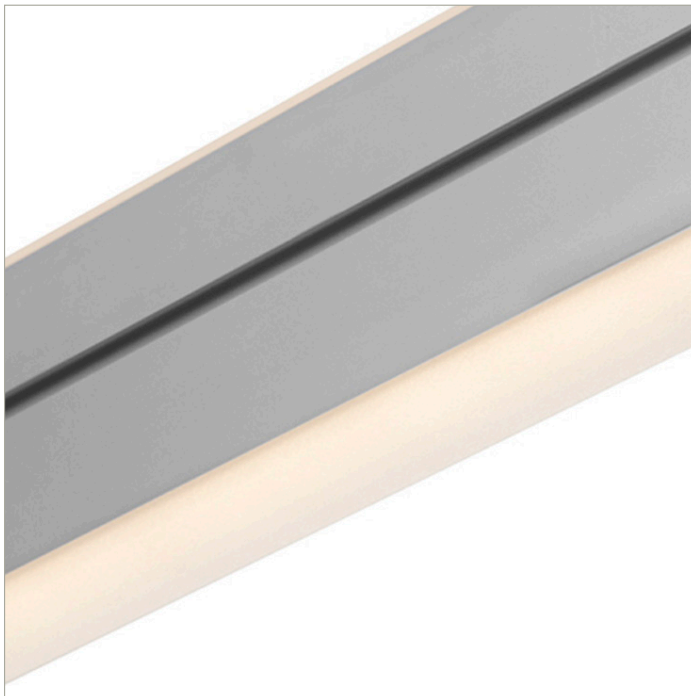
DoubleRace™ | 107 | 120° Batwing, Flat, up | Diffuse, Round, down | 90 CRI | LO

107-DR-XX-4-48-XX-XX-XX-XX-X-X-Z-LO-359-G12-X-XX-X

	2700K	3000K	3500K	4000K
Efficacy - Lumens per Watt	80	82	84	86
Total Lumens, 4' rail length (1219mm)	2373	2448	2498	2548
Lumens per foot (305mm)	593	612	625	637
Lumens per foot UP (305mm)	280	289	295	301
Lumens per foot DOWN (305mm)	314	348	330	337
Input Power (W), 4' rail length (1219mm)	29.9	29.9	29.9	29.9
Watts per foot (305mm)	7.5	7.5	7.5	7.5
CRI	96	96	96	96

Due to the large number of options in Vode's product offering, most Vode IES reports are factored reports prepared from source reports. Source reports are the IES test reports prepared for Vode by an NVLAP accredited photometric test laboratory. Factored reports are based on data from the Vode source reports.

If the data above is in black, it is directly from a Vode source report. If it is in grey, it is factored from Vode source reports. Reference details on Vode source reports can be found on the [IES File Finder](#) page on [vode.com](http://vode.com).



## IES Report

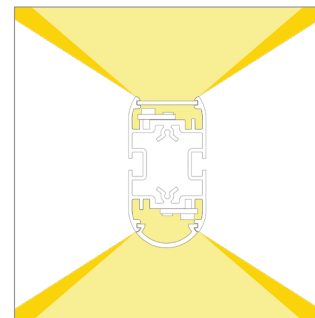
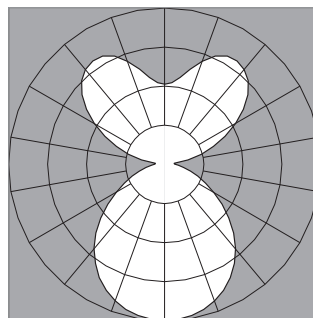
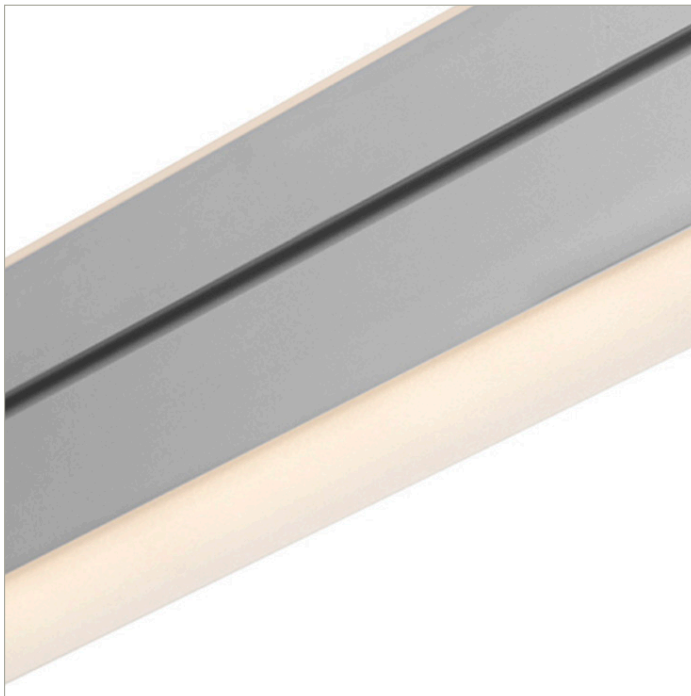
DoubleRace™ | 107 | 120° Batwing, Flat, up | Diffuse, Round, down | 90 CRI | SO

107-DR-XX-4-48-XX-XX-XX-XX-X-X-Z-SO-359-G12-X-XX-X

	2700K	3000K	3500K	4000K
Efficacy - Lumens per Watt	99	102	104	106
Total Lumens, 4' rail length (1219mm)	4747	4896	4996	5096
Lumens per foot (305mm)	1187	1224	1249	1274
Lumens per foot UP (305mm)	560	577	589	601
Lumens per foot DOWN (305mm)	627	647	660	673
Input Power (W), 4' rail length (1219mm)	48.2	48.2	48.2	48.2
Watts per foot (305mm)	12.1	12.1	12.1	12.1
CRI	96	96	96	96

Due to the large number of options in Vode's product offering, most Vode IES reports are factored reports prepared from source reports. Source reports are the IES test reports prepared for Vode by an NVLAP accredited photometric test laboratory. Factored reports are based on data from the Vode source reports.

If the data above is in black, it is directly from a Vode source report. If it is in grey, it is factored from Vode source reports. Reference details on Vode source reports can be found on the [IES File Finder](#) page on [vode.com](#).



## IES Report

DoubleRace™ | 107 | 120° Batwing, Flat, up | Diffuse, Round, down | 90 CRI | HO

107-DR-XX-4-48-XX-XX-XX-XX-X-X-Z-HO-359-G12-X-XX-X

	2700K	3000K	3500K	4000K
Efficacy - Lumens per Watt	92	95	97	99
Total Lumens, 4' rail length (1219mm)	9018	9303	9493	9683
Lumens per foot (305mm)	2255	2326	2373	2421
Lumens per foot UP (305mm)	1064	1097	1119	1142
Lumens per foot DOWN (305mm)	1191	1229	1254	1279
Input Power (W), 4' rail length (1219mm)	98.4	98.4	98.4	98.4
Watts per foot (305mm)	24.7	24.7	24.7	24.7
CRI	96	96	96	96

Due to the large number of options in Vode's product offering, most Vode IES reports are factored reports prepared from source reports. Source reports are the IES test reports prepared for Vode by an NVLAP accredited photometric test laboratory. Factored reports are based on data from the Vode source reports.

If the data above is in black, it is directly from a Vode source report. If it is in grey, it is factored from Vode source reports. Reference details on Vode source reports can be found on the [IES File Finder](#) page on [vode.com](#).